



# ***Haxial RemoteAdminTool 1.080 Documentation***

Haxial Software  
<http://www.haxial.com/>

## **Description**

Haxial RemoteAdminTool (RAT) allows you to remotely control a computer. It uses encryption to protect your communications. It is particularly useful for a computer that is being used as a server because you can administer your server even if you are not physically located in front of it. You can do the following tasks remotely over the Internet:

- See a list of the processes running on the remote computer.
- Exit/Terminate/Restart processes.
- Launch programs.
- View and control the display of the remote computer.
- See how much free space there is on each hard disk.
- Empty the trash / recycle bin.
- Restart/shutdown the computer.
- View how long the server has been running (uptime).

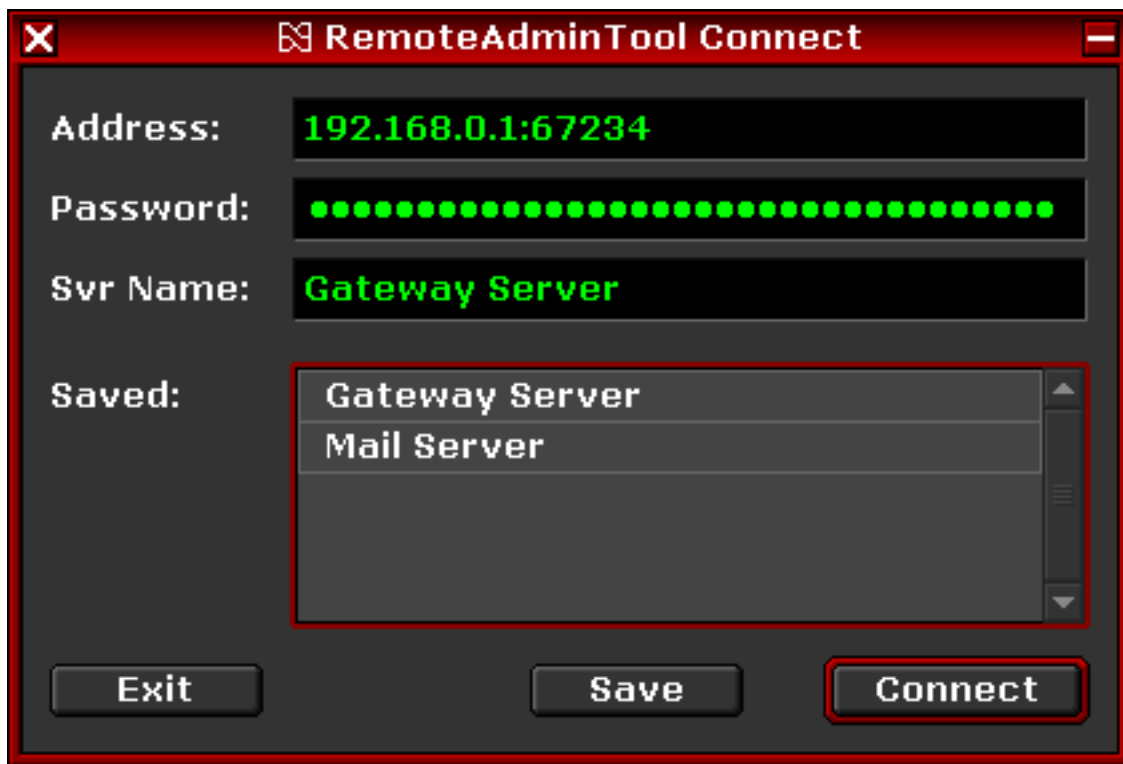
RAT is actually 2 programs, the RAT Client and the RAT Server. RAT Server runs on the computer that you want to remotely control. RAT Client runs on the computer that you are currently using, and you use it to connect to the Server. You cannot remotely control a computer unless RAT Server is running on it.

## **System Requirements**

- MS Windows 95 or better, or
- MacOS 9 with CarbonLib 1.3.1 or better, or
- MacOS X (10) or better.

## **The Connect Window**

When you open RAT Client, the first window you see looks like this:

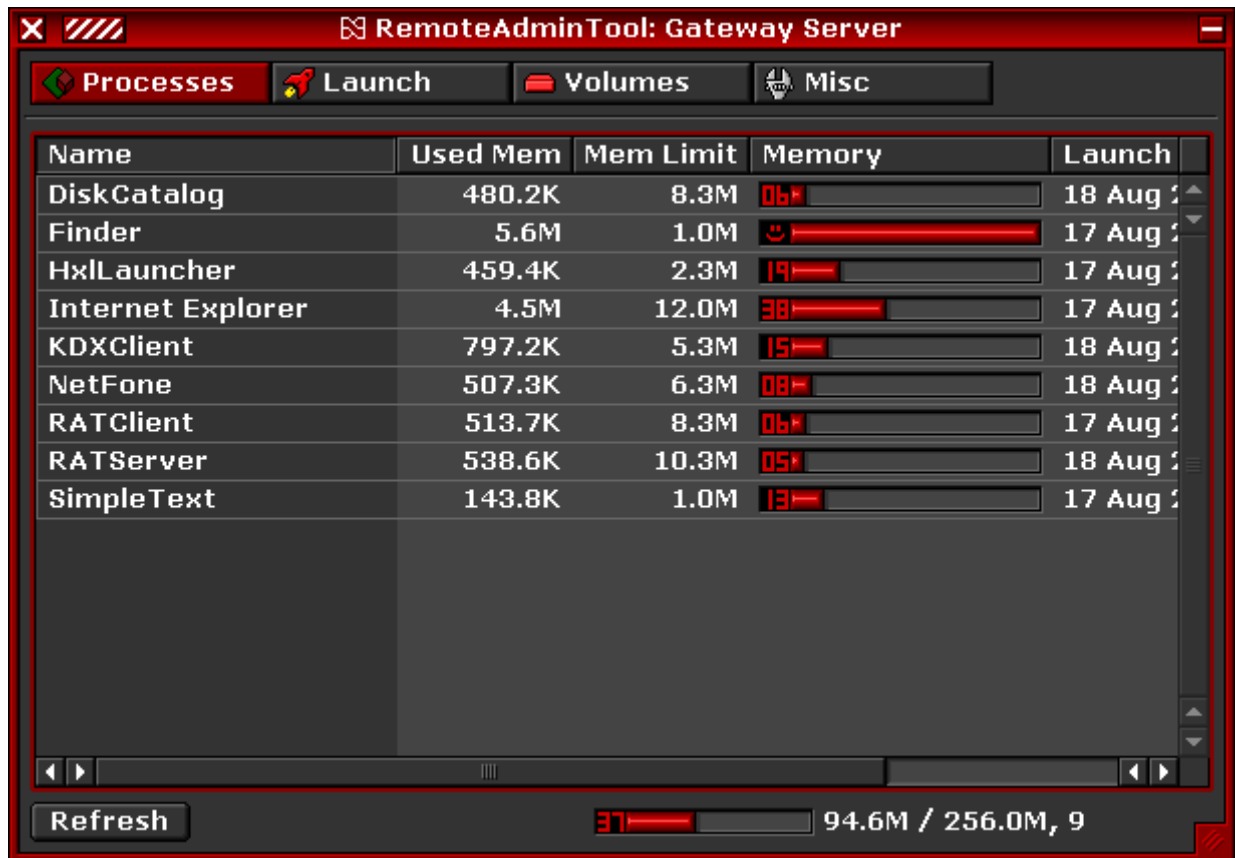


This window allows you to connect to a RAT Server. Here is what each item does:

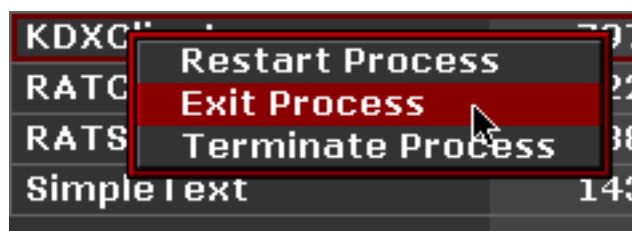
- Address: Enter the address of the computer which you want to control. RAT Server must be running on that computer.
- Password: Enter the password for the remote computer. This is the password that you chose when you first started RAT Server on that computer.
- Svr Name: If you type a name in here and click the "Save" button, the information in the 3 text boxes is saved into an item in the list below it.
- Saved: Click the "Save" button to save the 3 text boxes into an item in the list. Then in future, you can simply click that item to connect, without having to type the address and password every time. Note that this list has a context menu: second-click or control-click an item to edit or delete it.
- Save: As above.
- Connect: After entering the address and password, you click the Connect button to continue.
- Exit: Exits/quits/closes the RAT Client program.

## The Main Window

When you successfully connect to a server, you will see a window which looks like this:



The Processes panel is displayed. This is a list of all the processes (running programs) on the remote computer. The “Refresh” button is used to update/refresh the list to the current information. At the bottom is a progress bar of the total memory usage, and the total number of processes. Second-click or control-click on an item to show a Context Menu:



This is what each command does:

- Restart Process: Asks the process to exit, then launches it again.
- Exit Process: Asks the process to exit.

**Terminate Process:** If Exit Process does not work, then you can try forcibly terminating it. This will cause unsaved data to be lost, so only use it if you have no other choice.

If you click the “Launch” button, the window changes to the Launch panel. This displays a list of programs that you can launch/open. Initially this list will be empty. You need to add items to the list by going to the “Launch Items” folder in the same folder as the RAT Server program on the remote computer. Place aliases/shortcuts into this folder to the programs/scripts that you want to be able to launch. Then click the “Refresh” button in RAT Client, and the list will display a copy of what is in the “Launch Items” folder. Click an item to launch it on the remote computer. You can optionally go back to the “Processes” panel and click “Refresh” to verify that it was launched.

If you click the “Volumes” button, the window changes to the Volumes panel. This displays a list of all the volumes (disks) on the remote computer. You can see how much space is used and free on each volume.

If you click the “Misc” button, the window changes to the Miscellaneous panel. Here is what each item does:

Empty Trash:	This empties the trash / recycle bin on the remote computer. After doing this, you can go back to the Volumes panel and click Refresh to see how much space was recovered.
Restart Computer:	Restarts the remote computer.
Shutdown Computer:	Causes the remote computer to shutdown (power off).
Operating System:	Which Operating System and version is running on the remote computer.
Server Started At:	The date/time at which RAT Server was started on the remote computer.
Duration Of Time:	The amount of time that RAT Server has been running on the remote computer (uptime).
Local Server Time:	The date/time according to the clock on the remote computer.
Refresh:	Refreshes/updates the time information.
View Display:	See documentation following.

## Viewing and Remote-Controlling the Display

Click the “View Display” button in the “Misc” panel in the main window to view what the remote computer is displaying. Initially the image will be blue while you are downloading it. If you have a slow connection, it may take some time for the image to appear. This image automatically updates — as the display on the remote computer changes, so does what you see in RAT.


You can also use this to remote-control the computer. You can type into the window and click on buttons etc as if you were typing/clicking on the remote computer (your clicks and keystrokes are transmitted to the remote computer, and then the display changes are transmitted back to you). Cable modem or better is recommend for this feature.

If your internet connection is slow and you wish to increase the speed of the View Display feature by decreasing the amount of data downloaded, here are some tips:

- Change the background/desktop/wallpaper of the remote computer to a solid color instead of a picture or pattern.
- Reduce the resolution of the display. For example from 1024x768 to 640x480.
- If possible, change the appearance of the operating system to a more simple appearance.
- Turn off anti-aliasing/smoothing of fonts.
- And generally reduce the amount of detail being displayed. This will allow it to be compressed to a smaller size, thereby decreasing the amount of data you must download to see the display.

MacOS: If you are remote controlling the display of a MS Windows computer from a Mac with only 1 mouse button, you can command-click to emulate the second mouse button. Also note that MacOS 9 does not recognize secondary mouse buttons even if you plug in a USB mouse with 2 buttons, so you will still need to use the command key.

## The Settings Window

The Settings window is accessible from the Window Menu  on the main window, and looks like this:



The Appearance menu lets you change the appearance of RAT to something that is more aesthetically pleasing to you. Please note that more appearance options are available than shown in this menu — you can download more Appearance files (“.hap” files) from the Haxial website or other sources. Place your “.hap” files into a folder named “Appearances” in the same folder as the RAT program, and then show the Settings window in RAT, and the contents of the Appearances menu will be replaced with the contents of the folder. For more information, please visit this website:

<http://www.haxial.com/appearance/>

## Unsupported Features

Unfortunately, due to deficiencies in some operating systems, not all features are supported on all operating systems. Here is a list of what is not supported:

### Windows 95/98/ME:

- In the Processes panel, the "Used Memory" and "Launch Time" columns are empty. This information is not available on Windows 95/98/ME. It does work correctly in Windows XP/NT5.
- In the Volumes panel, the free/used/total space may be reported incorrectly. It does work correctly in Windows XP/NT5 (Microsoft fixed the bug).

### Windows NT4:

- The Processes list may be empty because NT4 does not properly support this feature. It does work correctly in Windows XP/NT5.

### Windows XP/NT5:

- Everything should work.

### MacOS 9.x:

- The "Terminate Process" command only requests the process to exit (same as the "Exit Process" command) because MacOS 9 does not provide a method for a program (RAT) to force a process to terminate.
- When using the View Display feature to remote control a MacOS 9 computer, dragging and menu operations do not work because of the very poor multitasking in MacOS 9. The MacOS X version does not have this problem.

### MacOS 10.x:

- The "Terminate Process" command only requests the process to exit (same as the "Exit Process" command) because Haxial does not know of any way to make MacOS X terminate a process.
- In the Processes panel, the memory information may be missing. MacOS 9 does supply this information, but unfortunately MacOS X fails to do so.

## **Security**

RAT uses strong encryption for your security. However, considering how much control RAT gives over your computer, it is very important that you choose a strong password. Try to choose a long password, such as a phrase. Even a short phrase is far more secure than a single word. Note that a single Dictionary word as your password is not secure. Adding some numbers, punctuation, and mixed uppercase/lowercase to your password is a good idea.

## **Troubleshooting**

*It doesn't work when I double-click when remote-controlling*

Try increasing the system's double-click speed/time on the remote computer to make it more forgiving about the speed of double-clicks. You can find this in the Mouse control panel.

*I'm viewing the display of a MacOS X computer but it is/went black*

This is a bug in MacOS 10.1 (it happens when MacOS puts the display to sleep). Upgrade to MacOS 10.2 which fixes the bug.

## **Any questions/suggestions/feedback?**

Your feedback and suggestions are welcomed. Feel free to send a message to Haxial using the form on this webpage:

<http://www.haxialsoftware.com/contact/>

--